

Performance Make-Up Instructions

To begin your make-up masterpiece, pull hair back away from your face so your bone structure and features can be easily seen. Get ready now to paint your work of art.



FACE

- foundation one shade darker than skin
- pressed powder in matte finish
- blush in warm coral tones
- bright red lipstick
- red lip-liner (if desired)

EYES

- eyeshadow in dark brown, medium brown, cream, white
- stick eyeliners in black, brown, white
- black mascara
- false lashes and glue (only if required)

BRUSHES

- angled brow liner (or brow pencil)
- eyeshadow
- brow and lash comb
- powder and blush
- lipstick liner
- cosmetic sponges

using cosmetic brushes allows for greater control in application and achieves a professional finish

COMPETITION AND STAGE MAKE-UP

STEP 1: EYES



prepare eyes with foundation and powder to create a dry canvas for shadow to go on smoothly



use angled brush to darken and emphasize brows with dark brown shadow



use shadow brush to fill outside half of lid with dark brown shadow to just above crease



use shadow brush to fill inside half of lid and upper crease with medium brown shadow



use shadow brush to fill area between brow and crease with cream shadow



use shadow brush to highlight brow line and space between nose and eye with white shadow



use black liner to draw an extended line across upper lid, thinning as you get closer to inside corner



use brown liner to draw a line to outside corner parallel to first black line - these lines should not touch



use white liner to fill between black and brown lines



use white liner to fill inside corner of eye



use white liner to draw a line down the centre of the lid



apply black mascara to top and bottom lashes in 2-3 coats - use lash comb to separate and remove clumps



clean eyeshadow debris from face and apply false lashes according to package instructions (if required) before moving on to step 2

COMPETITION AND STAGE MAKE-UP

STEP 2: FACE

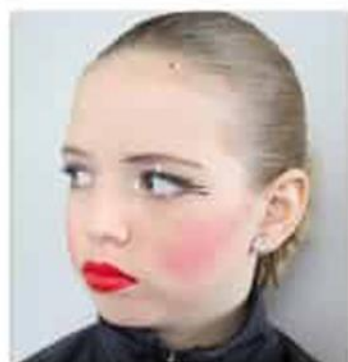


use sponge to apply foundation following natural lines over face and extending just under the chin

set with powder



use blush brush to apply blush at an angle across cheeks and following natural contours of cheekbone



outline lips with brush or liner pencil and fill

add crystal earrings if required